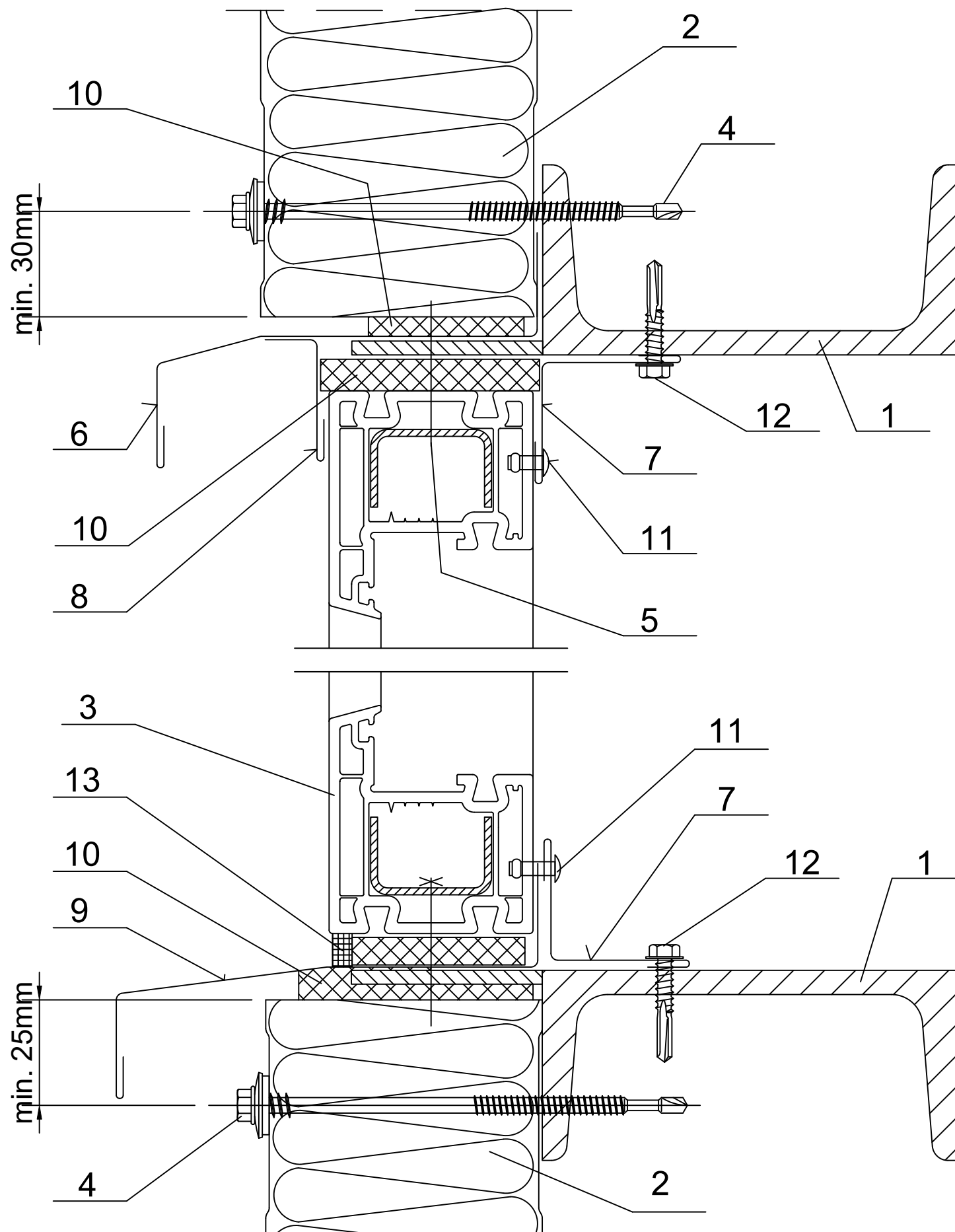


Date	Rev. date	Work nr.	Drw. nr.	Rev.
Drawn by Ruukki	Rev.	M27/S30	-	
Scale 1:3	Building		File nr. P2001/003-00039	



- |   |  |
|---|--|
| 1. Steel sheeting rail acc. to engineering design of the structure            | 8. Custom orderd flashing                              |
| 2. Ruukki SP2B PIR  | 9. Custom ordered drip                                 |
| 3. PCV window   | 10. Impregnated polyurethane sealant or expanding foam |
| 4. Panel fastener for hot-rolled sheeting rail or for cold-bent sheeting rail | 11. Steel rivet (every 300 mm)                         |
| 5. Tap screw for fixing windows (every 500 mm)                                | 12. Tap screw for metal sheet                          |
| 6. EA1B01 plinth flashing   | 13. Permanently elastic sealing compound               |
| 7. Flashing EA1B05  |  |